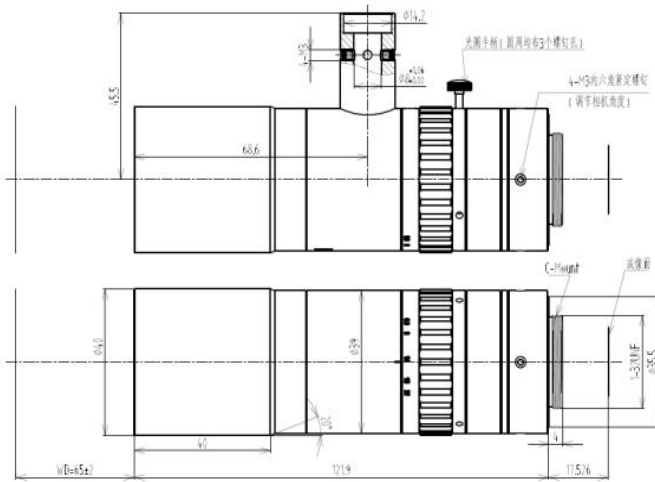
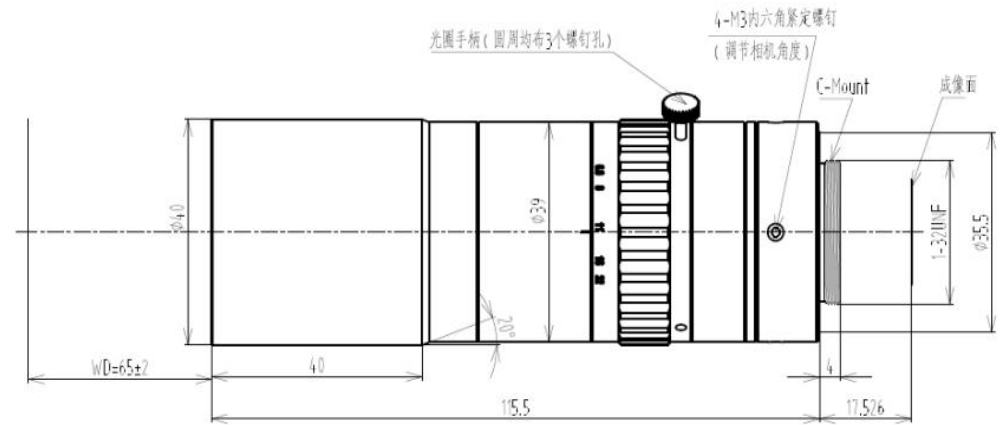


Low Magnification NIR STANDARD Telecentric Lens for 1.1"

Model	Spectrum (nm)	Light Type	Sensor Type	Magnification	Mag	W.D.	F.NO	Numerical Aperture	Telecentricity	TV Distortion	Depth Of Field(mm)	Object Resolution	TTL (mm)	Mount	2/3" FOV (D×H×V)	1" FOV (D×H×V)	1.1" FOV (D×H×V)	Dimensions (mm)	Weight (g)
MT111R1W65C-L	400-1250 Low	Coaxial	1.1"	1X	1	65mm	6.8	0.072	<0.05°	<0.03%	0.31	4.66um	139.2	C	/	/	17.6×14.1×7.7	φ45.5×121.9	/
MT111R1W65C-I	400-1250 High	Non-Coaxial	1.1"	1X	1	65mm	6.8	0.072	<0.05°	<0.03%	0.31	4.66um	132.8	C	/	/	17.6×14.1×7.7	φ40×115.5	/

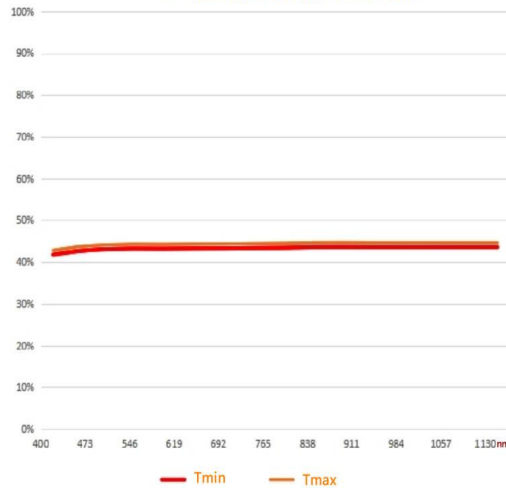


MT111R1W65C-L

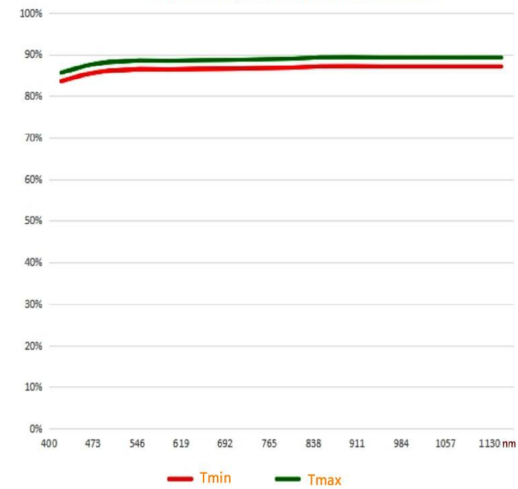


MT111R1W65C-I

-L: Coaxial Type Spectral Transmittance



-I: Non-Coaxial Type Spectral Transmittance



Unit: mm

TOLERANCE :  
LINEARITY TOLERANCES: ±0.05  
ANGULAR TOLERANCES ARE: ±30'  
DRAFT ANGLES AREA: ±0.5°/SIDE

Trigonometry